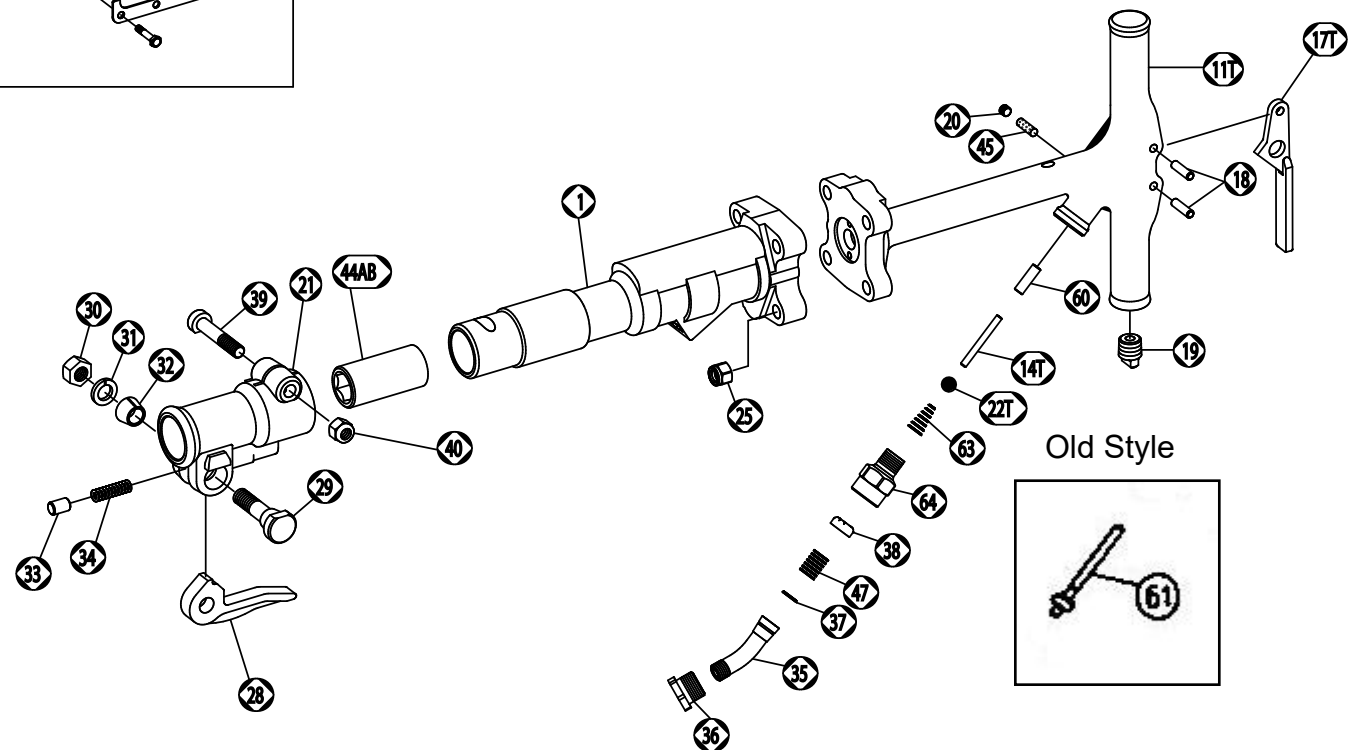
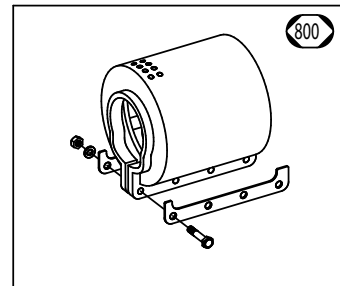




Toku TRC-30 Trench Digger



Toku TRC-30 Trench Digger

Index	Tamco	Harper	Thor	APT	Jet	Kent	Description
1	410201010	66301	43026		PB30-01	K06145	Cylinder
11T	410221480	66309	44011	91159	TD30-11		Back Head
11TCP	41022148A	66368	45294				Back Head Complete
14T	410221E00						Throttle Pin
17T	410221310	66316	48879	1819	TD30-17T		Throttle Lever
18	410201330***	66918	43393	105	PB30-18		Throttle Lever Pin
19	134905012	66319		209	PB30-19		Oil Plug (NPTF)
20	134903001	66920	68073		PB30-20		Oil Control Plug (PP-2 PT 1/8")
21	410201530	66321	43783	3143	PB30-18	K01283	Front Head
21CP	41020153D	66369		3143		KBM06146	Front Head (Complete) (Incl. 21,28,29,30,31,32,33,34)
22T	130505036						Throttle Valve Ball 9/16"
25	134201012	66325	49019		PB30-21	K00694	Nylon Nut (UNF 1/2")
28	410201610	66328	43784	893		K01137	Steel Retainer
29	410201621	66329	43787		PB30-23		Steel Retainer Bolt
30	134601016***				PB30-25	K00520	Nylon Nut (UNF 5/8")
31	131301116	66924	46897		PB30-28	K09847	Spring Washer M16
32	410201640	66332	43786		PB30-29	K00667	Steel Retainer Bolt Bushing
33	410201650	66333	43788	207	PB30-30	K02034	Steel Retainer Plunger
34	130801028	66334	43785		TS-50101	K02033	Steel Retainer Spring
35	410201370	66335	43791		PB30-35	K06116	Air Inlet Swivel
36	410201390	66336	43792		PB30-36	K06113	Air Inlet Swivel Nut
37	131103014	66346	91108		PB30-37	K02278	O-Ring (S-16)
38	136801005	66338	43044		PB30-38	K02043	Air Inlet Screen
39	410201540	66339	47947		PB30-36		Front Head Bolt
40	134201012	66340	91126		PB30-37	K00694	Nylon Nut (UNF 1/2")
44A	410201570	66343	43024	191		K01280	Front Head Bushing 7/8"
44B	410205570	66344	43025	192	PB30-38	K01282	Front Head Bushing 1"
45	136101011***	66945	43473	112	PB30-45		Oil Control Felt
47	130801027	66347	47754		PB30-47	K06114	Air Inlet Swivel Spring
60	410221300	66360	61952	212	TD30-60		Throttle Valve Stem Guide
			86852				
61	410221270	66361	43761	3360	TD30-61		Throttle Valve
63	130801030	66363	44007	1821	TD30-63		Throttle Valve Spring
64	410221790	66364	47995		TD30-64		Screw Bushing
800	41020187C						Muffler

* Denotes the parts are the same as Toku TPB-90

*** Denotes the parts are the same as Toku TPB-90 and TPB-60

^ Denotes retro parts 14R, 16R, and 22R as a set can be used in place of set 14 / 16, please see schematic.

****ALL PRICING IS SUBJECT TO CHANGE WITHOUT NOTICE****