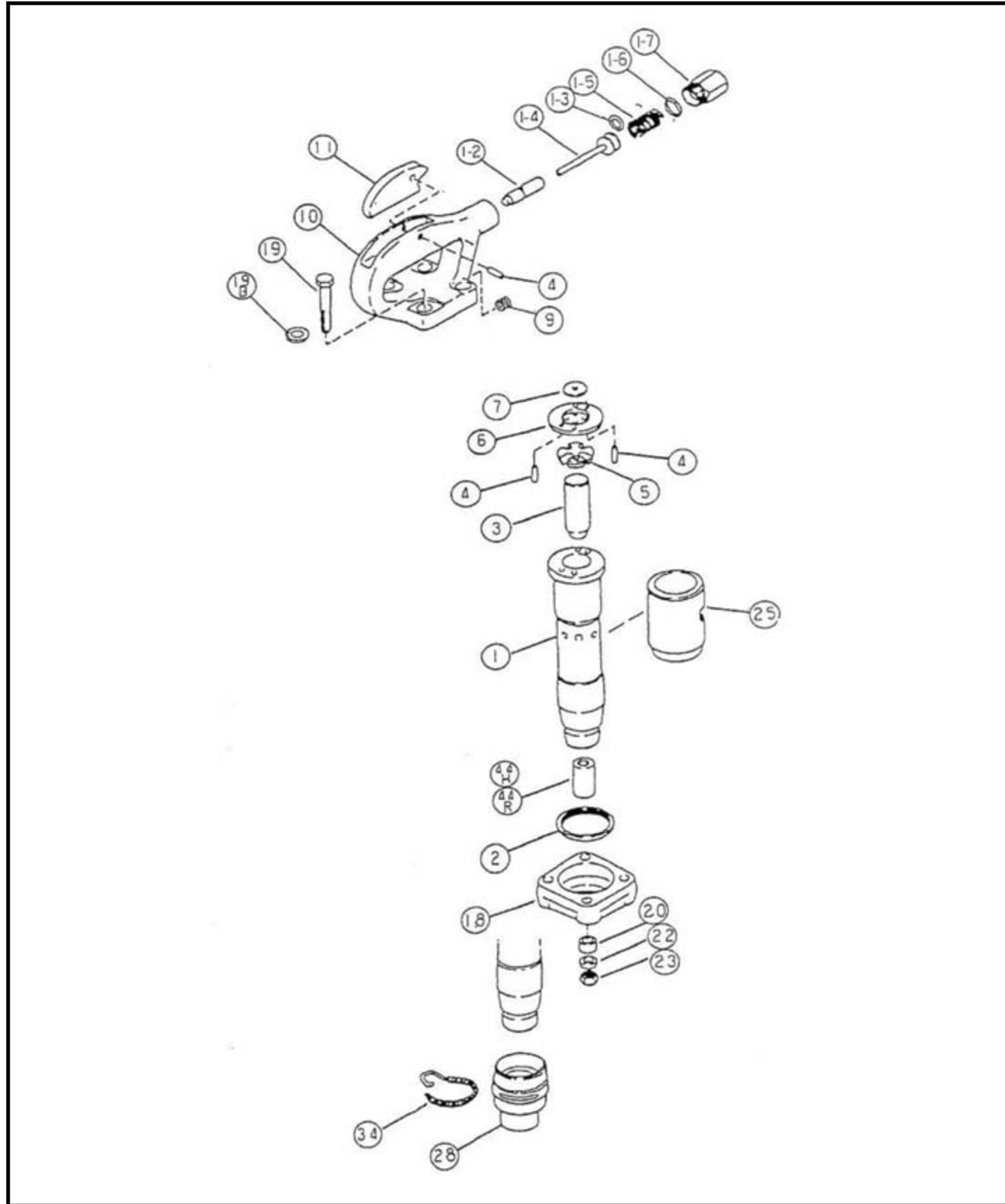




Toku TCH-2,3,4 Chipping Hammer



Toku TCH-2,3,4 Chipping Hammer

Index	Tamco	Kent	Description
1-2	Y10430010	K04193	Cylinder for TCH-2
1-3	Y10450010	K04194	Cylinder for TCH-3
1-4	Y10470010	K04195	Cylinder for TCH-4
2	Y10430020	K04196	Flange Bumper Ring
3-2	Y10430030	K04273	Piston for TCH-2
3-3	Y10450030	K04274	Piston for TCH-3
3-4	Y10470030	K04275	Piston for TCH-4
4	Y10103080	K04197	Spring Pin 6 x 24
5	Y10430050	K04198	Bumper Valve Seat
6	Y10430060	K04199	Valve Spacer
7	Y10212150	K04229	Valve
9	Y10430090	K04231	Hex Socket Plug GDL 1/8 -27
10	Y10430100	K04235	Handle
11	Y10601110	K04236	Lever
12	Y10430120	K04237	Throttle Valve Bushing
13	Y10430130	K04238	O-Ring AS568-203
14	Y10430140	K04239	Throttle Valve
15	Y10430150	K04241	Throttle Valve Spring
16	Y10430160	K04242	O-Ring G-25
17	Y10430170	K04246	Air Inlet
18	Y10430180	K04243	Flange
19	Y10430190	K04244	Handle Hex Bolt 11T (M12 x 80)
19B	Y1043019B	K04256	Spring Washer (25 x 12.2 x 1.5)
20	Y10430200	K04247	Bumper Washer
22	Y10430220	K04215	Handle Bolt Spacer
23	Y10430230	K04248	Handle Bolt Nut M12
25	Y10430250	K04249	Exhaust
28	T25119002	K04173	Body Retainer
34	Y10212300	K02428	Lock Coil Spring
44H	Y1021224H	K04170	Shank Bushing (Hex)
44R	Y1021224R	K04165	Shank Bushing (Round)

Handle Thread = 3/4" -14" Straight Pipe

****ALL PRICING IS SUBJECT TO CHANGE WITHOUT NOTICE****