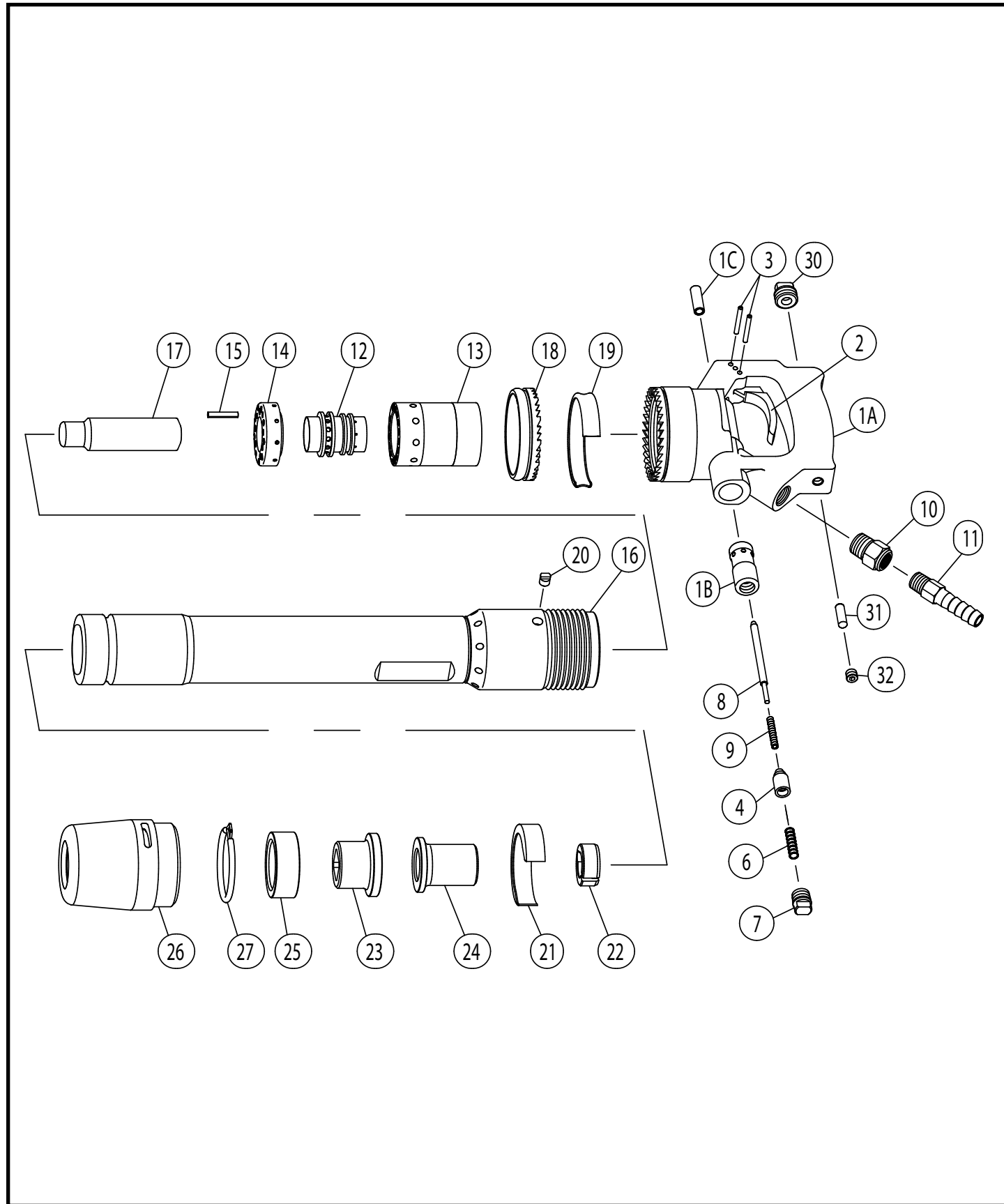




# Toku RB-110D Rivet Buster



# Toku RB-110D Rivet Buster

Index	Tamco	Jet	Description
1	41047101D	41047101D	Handle Complete
1A	41047101F	41047101F	Handle With Bushing
1B	410460060	410460060	Throttle Valve Bushing
1C	410221300	410221300	Throttle Valve Stem Guide
2	410207120	410207120	Lever
3	130401030	130401030	Lever Pin 3.969 x 34.6
4	410466050	410466050	Throttle Valve
6	130801065	130801065	Throttle Valve Spring
7	134905019	134905019	Throttle Valve Cap
8	410466C10	410466C10	Throttle Valve Pin
9	130801066	130801066	Valve Pin Spring
10	134704030	134704030	Screw Bushing 1/2" x 3/8"
11	134803040	134803040	Hose Stem 3/8" x 1/2"
	SF-01038		3/8" x 24 Thread x 1/2" Hose Barb Swivel
12	410470100	410470100	Valve
13	410470150	410470150	Valve Case
14	410470140	410470140	Valve Seat
15	130620061	130620061	Spring Pin
16	410470190	410470190	Cylinder
17	410470200	410470200	Piston
18	410470300	410470300	Clutch
19	410460310	410460310	Clutch Band
20	410470320	410470320	Clutch Key
21	410470470	410470470	Exhaust Band
22	410470560	410470560	Piston Stopper
23	T33210300	552103	Lower Sleeve (Old Part# 410470500)
24	T33210100	552101	Upper Sleeve (Old Part# 410470510)
25	T33210400	552104	Rubber Bumper (Old Part# 136301003)
26	T33219001	552191	Retainer (Old Part# 410470360)
27	T33219400	550098	Lock Spring (Old Part# 130801050)
30	410211770	410211720	Oil Plug NPFT 1/2"
31	136101011	136101011	Oil Control Felt
32	134903001	134903001	Oil Control Plug PP-2 PT 1/8"

**\*\*ALL PRICING IS SUBJECT TO CHANGE WITHOUT NOTICE\*\***