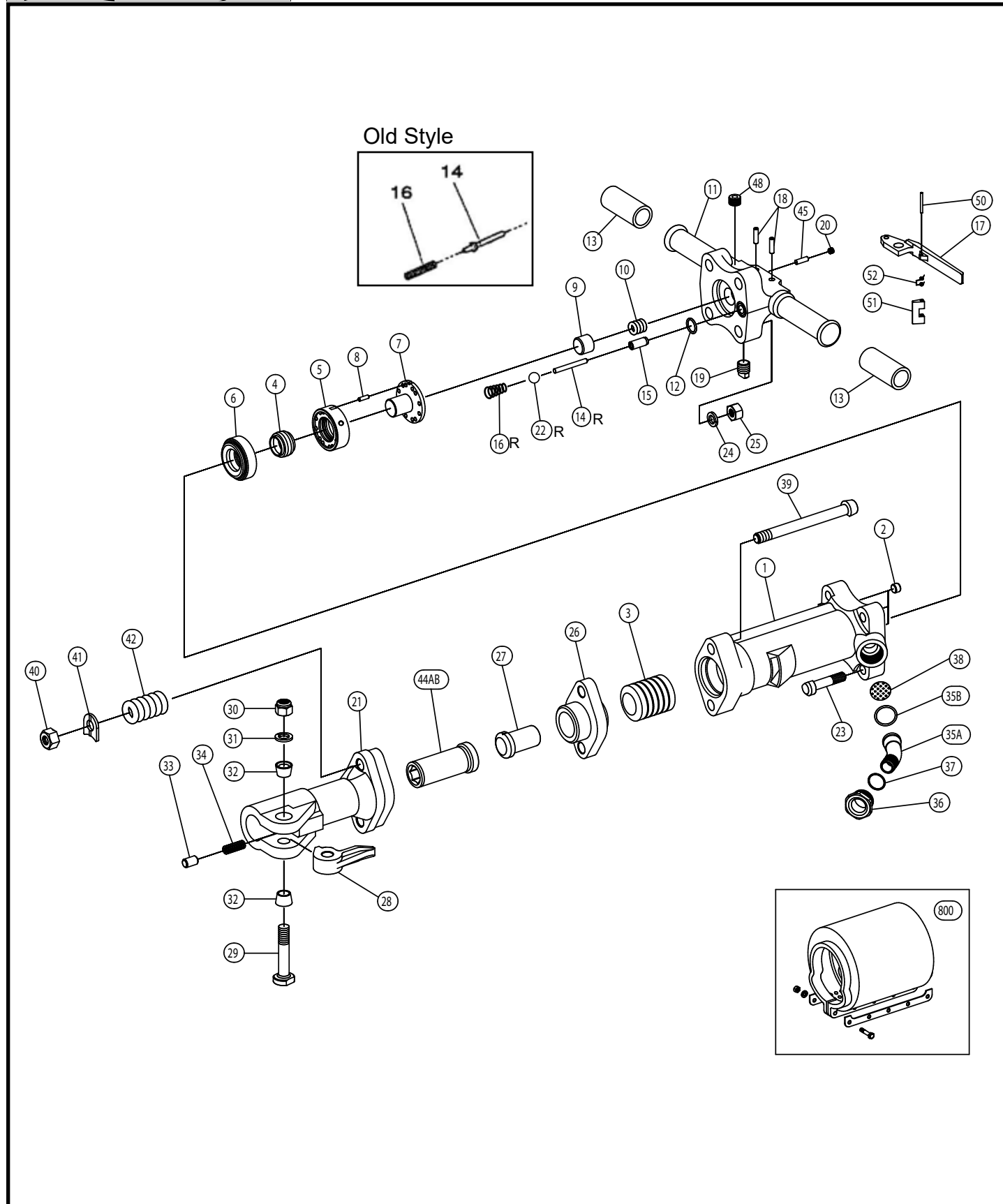




Toku TPB-90 Paving Breaker



Toku TPB-90 Paving Breaker

Index	Tamco	Harper	Thor	APT	Jet	Kent	Description
1	410271010	66901	46895	140	PB90-01	K05728	Cylinder
2	136301011*	66902	48385	1743	PB90-02	K04039	Cylinder Plug
3	410271040	66903	43484	118	PB90-03	K00042	Piston
4	410241150*	66904	43186	104	PB90-04	K05700	Automatic Valve
5	410271190	66905	43480	117	PB90-05	K05704	Valve Chest
6	410271170	66906	46894		PB90-06	K05705	Valve Seat
7	410271200	66907	43478	116	PB90-07	K05702	Valve Guide
8	130401035*	66908	43477	115	PB90-08	K05701	Valve Chest Dowel Pin
9	410241660*	66909	43474	113	PB90-09	K01297	Plunger
10	130801040*	66910	43475	114	PB90-10	K01298	Plunger Spring
11	410271480	66911	51973		PB90-11		Back Head (Bare)
12	131105017*	66912	82907		PB90-12	K05706	Back Head Port Seal O-Ring 6227-17
13	136601011*	66913	43476	160	PB90-13	K03019	Rubber Grip
14	410201270*	66914	46893		PB90-14	KBM01285	Throttle Valve
14R	410241E00^						Throttle Valve Pin Retro Fit
15	410201300*	66915	43395	106	PB90-15	K01294	Throttle Valve Stem Guide
16	130801041*	66916	43397	107	PB90-16	K01291	Throttle Valve Spring
16R	130801009^						Throttle Spring Retro Fit
17	410241311*	66917	43428	132	PB90-17A	K01296	Throttle Lever
18	410201330*	66918	43393	105	PB90-18		Throttle Lever Pin 8 x 30
19	134905012	66919	43399	108	PB90-19	K01293	Oil Plug
20	134903001*	66920	68073	111	PB90-20	K00731	Oil Control Plug Hex Pt 1/8"
21	410271531	66921	46900		PB90-21		Front Head
22R	130505048^						Poly Rubber Ball 3/4" Retro Fit
23	131501018	66923	43502		PB90-23	KBM001126	Back Head Bolt
24	131301116*	66924	43143	102	PB90-24	K09847	Back Head Bolt Lock Washer M16
25	410241510*	66925	43500	121	PB90-25	K01274	Back Head Bolt Nut
26	410271591	66926	46897	137	PB90-26	K05709	Tappet Seat
27	410271581	66927	46896	136	PB90-27	K00068	Tappet
28	410241610*	66928	43527	130	PB90-28	K01136	Steel Retainer
29	410241620*	66929	43524		PB90-29	K01132	Steel Retainer Bolt
30	134601019*	66930	43525	129	PB90-30	K00954	Hex Nylon Nut
31	131303048*	66931	43007	101	PB90-31	K03997	Steel Retainer Bolt Nut Washer 3/4"
32	136301010*	66932S	45605(S)		PB90-32	K01131	Steel Retainer Bolt Bushing
	136301010R					K05719	Rubber Retainer Bolt Bushing
	136301010P						Poly Retainer Bolt Bushing
33	410241650*	66933	43522	126	PB90-33	K01287	Steel Retainer Plunger
34	130801042*	66934	43521	125	PB90-34	K01288	Steel Retainer Spring
35A	410271370*	66935	43512	124	PB90-35	KBM01300	Air Inlet Swivel
35B	131103023*	66922	45259	151	PB90-35B	K05713	Air Inlet Swivel O-Ring S-29
36	410271390*	66936	43169	103	PB90-36	KBM01295	Air Inlet Swivel Nut
37	131102002*	66937	48401	1188	PB90-37	K01937	Air Inlet Swivel Nut O-Ring G-30
			91881				
38	136801007*	66938	43510	123	PB90-38	K00508	Air Inlet Screen
39	131501017	66939	98434		PB90-39	KBM05708	Front Head Bolt
40	410241550*	66940	43414	110	PB90-40	K01129	Front Head Bolt Nut
41	410241560*	66941	91468	138	PB90-41	K01289	Front Head Bolt Lock Washer
42	130801043*	66942	43412	109	PB90-42	K01290	Front Head Bolt Spring
44A	410241572*	66943	46898		PB90-43A		Front Head Bushing 1-1/8"
44B	410245572*	66944	46899		PB90-43B		Front Head Bushing 1-1/4"
45	136101011*	66945	43473	112	PB90-45	K00591	Felt Oiler
48	134903004	66948	48402		PB90-48		Oil Tank
50	130604040*				PB90-50		Spring Pin
51	410241761*				PB90-51		Stop Lever
52	130801046*				PB90-52		Stop Lever Spring
11CP	41027148J	66951	51973				Back Head
44ACP	41027153D	66955					Front Head CMP 1-1/8" (Incl # 21, 28, 29, 30, 31, 32, 33, 34, 44A)
44BCP	41027553D	66956	43533				Front Head CMP 1-1/4" (Incl # 21, 28, 29, 30, 31, 32, 33, 34, 44B)
800	41027187C						Muffler

****ALL PRICING IS SUBJECT TO CHANGE WITHOUT NOTICE****

* Denotes the parts are the same as Toku TPB-90

^ Denotes retro parts 14R, 16R, and 22R as a set can be used in place of set 14 / 16, please see schematic.