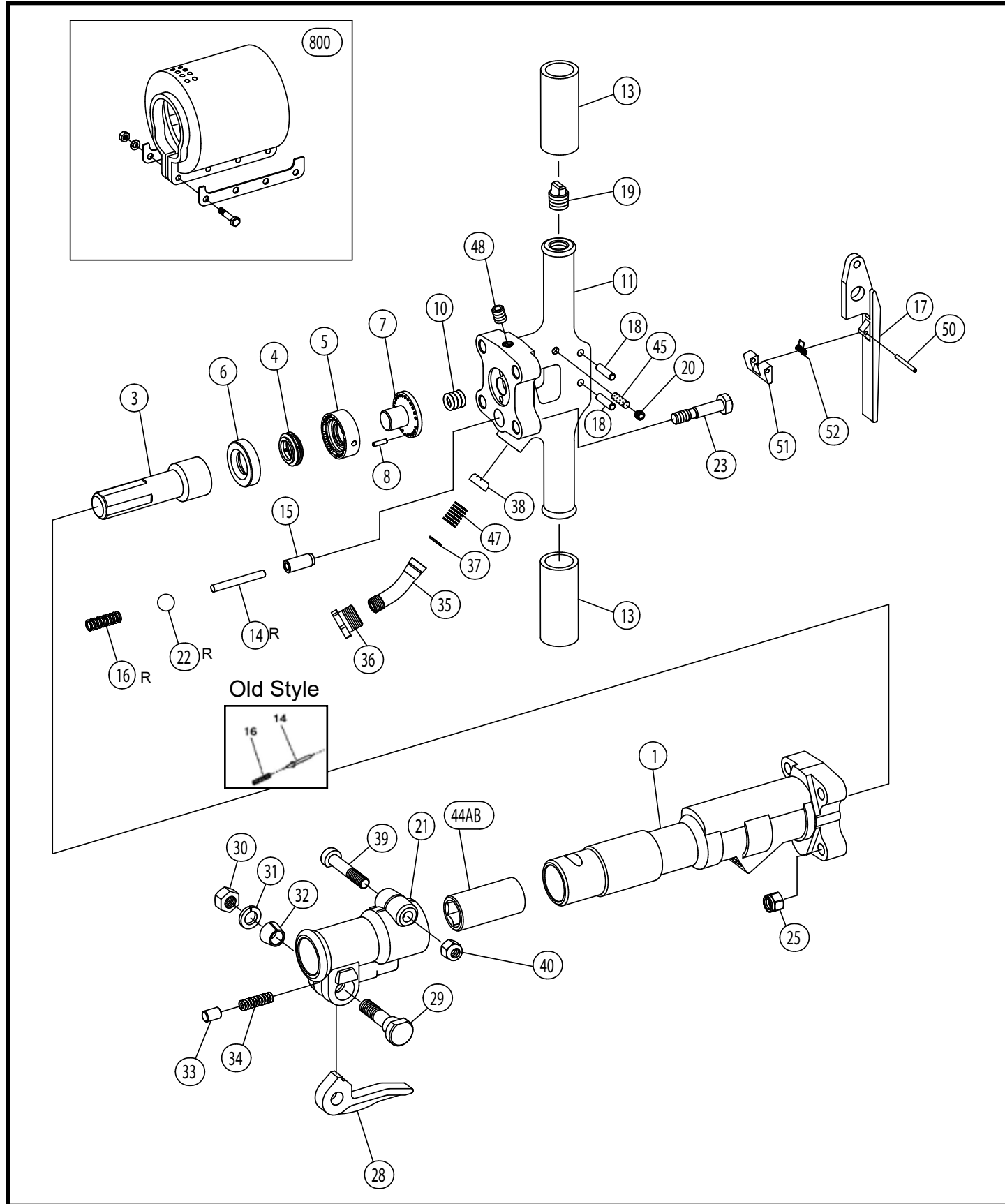




Toku TPB-30 Paving Breaker



Toku TPB-30 Paving Breaker

Index	Tamco	Harper	Thor	APT	Jet	Kent	Description
1	410201010	66301	43026		PB30-01	K06145	Cylinder
3	410201040	66303	43028	193	PB30-03	K00021	Piston
4	410201151	66304	43038		PB30-04	K06102	Valve
5	410201191	66305	43037	195	PB30-05	K06107	Valve Chest
6	410201171	66306	43036	194	PB30-06	K06108	Valve Seat
7	410201201	66307	43039	197	PB30-07	K06103	Valve Guide
8	130401025	66308	43043	199	PB30-08	K06105	Valve Chest Dowel Pin
10	130801023	66310	43042	1556	PB30-10	K06104	Plunger Spring
11	410201480	66311	43795	4357		K06142	Back Head
13	136601011***	66913	43476	160	PB30-13	K03019	Rubber Grip
14	410201270***	66914	46893		PB30-14	K01285	Throttle Valve
14R	410201E00^						Throttle Pin Retro Fit
15	410201300***	66915	43395	106		K01203	Throttle Valve Stem Guide
16	130801026	66313	43047	2000		K06123	Throttle Valve Spring
16R	130801031^						Retro Fit Spring
17	410241311***	66917	43428	132	PB30-15	K01296	Throttle Lever
18	410201330***	66918	43393	105	PB30-16	K01292	Throtte Lever Pin
19	134905012	66319	43399	108		K01293	Oil Plug (NPTF 1/2")
20	134903001***	66920	68073		PB30-17	K00731	Oil Control Plug (PP-2 PT 1/8")
21	410201530	66321	43783	3123	PB30-18		Front Head
22R	130505048^				PB30-19		Poly Rubber Ball 3/4" Retro
23	410201500	66323	49020		PB30-20		Back Head Bolt
25	134201012	66325	49019		PB30-21	K00694	Nylon Nut (UNF 1/2")
28	410201610	66328	43784	893		K01137	Steel Retainer
29	410201621	66329	43787		PB30-23		Steel Retainer Bolt
30	134601016***				PB30-25	K00520	Nylon Nut (UNF 5/8")
31	131301116	66924	46897		PB30-28	K09847	Spring Washer M16
32	410201640	66332	43786		PB30-29	K00667	Steel Retainer Bolt Bushing
33	410201650	66333	43788	207	PB30-30	K02034	Steel Retainer Plunger
34	130801028	66334	43785		TS-50101	K02033	Steel Retainer Spring
35	410201370	66335	43791	1816	PB30-32	K06116	Air Inlet Swivel
36	410201390	66336	43792	1815	PB30-33	K06113	Air Inlet Swivel Nut
37	131103014	66346	91108	1814	PB30-34	K02278	O-Ring S-16
38	136801005	66338	43044	1827	PB30-35	K02043	Air Inlet Screen
39	410201540	66339	47947		PB30-36		Front Head Bolt
40	134201012	66340	91126		PB30-37	K00694	Nylon Nut (UNF 1/2")
44A	410201570	66343	43024	191		K01280	Front Head Bushing 7/8"
44B	410205570	66344	43025	192	PB30-38	K01282	Front Head Bushing 1"
45	136101011***	66495	43473	112	PB30-39	K00591	Oil Control Felt
47	130801027	66347	47754	1817	PB30-40	K06114	Air Inlet Swivel Spring
48	134903002	49713			PB30-44A		GDL Plug (NPTF 1/4")
50	130604040				PB30-44B		Spring Pin 4 x 40
51	410241761***				PB30-45		Stop Lever
52	130801046***				PB30-47		Stop Lever Spring
11CP	41020148E	66365	44011				Back Head Complete
21CP	41020153D	66369		3143		KBM06146	Front Head Complete (Incl # 21,28,29,30,31,32,33,34)
800	41020187C						Muffler

* Denotes the parts are the same as Toku TPB-90

*** Denotes the parts are the same as Toku TPB-90 and TPB-60

^ Denotes retro parts 14R, 16R, and 22R as a set can be used in place of set 14 / 16, please see schematic.

****ALL PRICING IS SUBJECT TO CHANGE WITHOUT NOTICE****