

MAINTENANCE INSTRUCTIONS

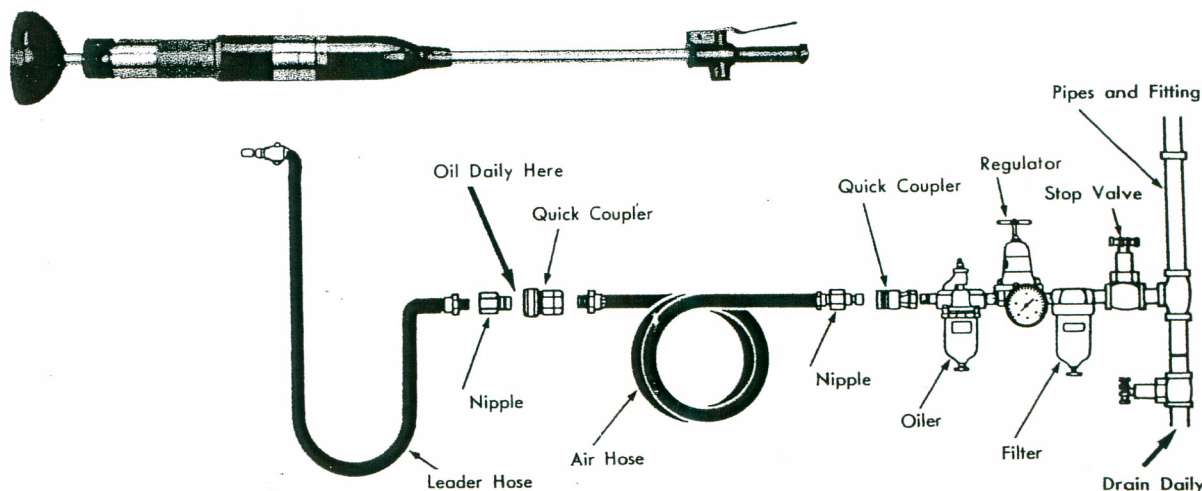
AIR TAMPER

MODEL T-6

TOKU

TOKU PNEUMATIC PRODUCTS

AIR HOSE AND HOSE CONNECTION :



“WARNING”

Safety is a primary consideration when operating percussion tools. The following information outlines procedures which should be followed to help insure a safe working environment to avoid personal injury.

1. ALWAYS WEAR APPROVED IMPACT RESISTANT EYE PROTECTION.
2. ALWAYS WEAR EAR PROTECTION.
3. ALWAYS WEAR GLOVES AND OTHER PROTECTIVE CLOTHING.
4. ALWAYS DIRECT EXHAUST AWAY FROM YOURSELF AND OTHERS IN THE AREA.
5. ALWAYS DISCONNECT TOOL FROM THE AIR SUPPLY WHEN NOT IN OPERATION.

IF QUICK-DISCONNECT COUPLINGS ARE USED, SEPARATE THE COUPLING FROM THE TOOL WITH A LEADER HOSE.

LUBRICATION

To flush out GUM and DIRT –you should do the following two steps EACH DAY.

1. (Before the shift), pour a liberal quantity of gum solvent oil into the tool's air inlet.
2. Connect tool to air line and operate.

Repeat this procedure before storing the tool.

Air line lubricator should be used in conjunction with the integral oiler. The importance of adequate and continuous lubrication cannot be overemphasized.

The importance of adequate and continuous lubrication cannot be overemphasized.

A few minutes operation without oil may severely damage the valve parts, cylinder and piston.

AIR SUPPLY (minimum requirements)

1. Compressor/10hp, 40 CFM at 90 psig (6.2bar).
2. When using two or more tools, all except leader hose should be 1" or larger.(see diagram above for pipings and fittings.)

FOR BEST OPERATION : Supply tool with 90 psig (6.2bar) of clean, dry air.

Higher pressure drastically reduces tool life and can void warranty.

LOSS OF POWER/ERRATIC ACTION (possible causes)

1. Reduced compressor output.
2. Excessive drain on air line.
3. Moisture or restricted pipe, hose or fittings.
4. Improper size or poor condition of pipe, hose or fittings.
5. Free running (or blank blow) can cause damage to the tool. Always hold the tool down to the work.

If everything else appears to be in order, then disassemble tool, replace worn or damaged parts, clean, reassemble and lubricate.

REPLACEMENT PARTS

Always use GENUINE TOKU TOOL Replacement Parts. When replacement parts are required, order by Part Number and Description from the Parts List.

SPECIFICATIONS

Type No.	Piston Dia.		Piston Stroke		Number of Impacts (b. p. m.)	Net Weight		Overall Length		Air Consumption		Hose Size	
	(mm)	(in)	(mm)	(in)		(kg)	(lb)	(mm)	(in)	(m ³ /min)	(cfm)	(mm)	(in)
T - 6	38.1	1½	140	5½	600	16.7	36.7	1,240	48¾	1.10	38.5	12.7	½

MAINTENANCE INSTRUCTIONS

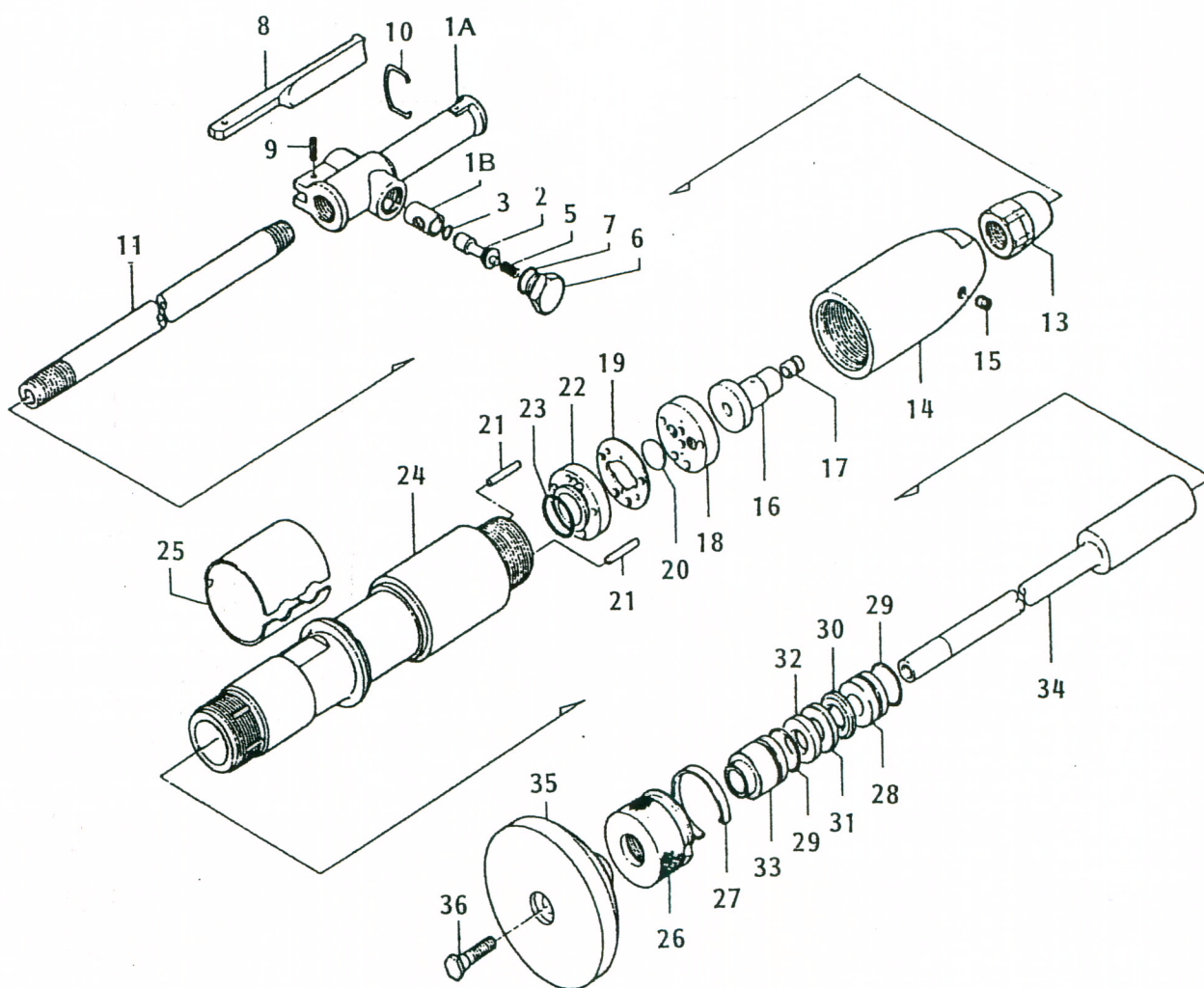
AIR TAMPER

MODEL **T-6**

TOKU

TOKU PNEUMATIC PRODUCTS

Exploded View



Spare Parts Service Chart

Parts List

Symbol No.	Parts No.	Q'ty Req.	Description	MUST REPLACE 100 %	HIGH WEAR 70 %	MEDIUM WEAR 50 %	LOW WEAR 30 %	NON WEAR 10 %	SUBJECT TO EXTERNAL DAMAGE
1	41060145A	1	Handle CP(Incl. Sym. No. 1A and 1B)					X	
1A	410601450	(1)	Handle Bare					X	
1B	410601090	(1)	Throttle Valve Bush					X	
2	410601080	1	Throttle Valve					X	
3	131108008	1	O'Ring(P-10)			X			
5	130801078	1	Throttle Valve Spring			X			
6	134905020	1	Throttle Valve Cap					X	
7	131101020	1	O'Ring(P-22)					X	
8	410601110	1	Throttle Lever					X	
9	130606022	1	Spring Pin(6x22)					X	
10	130801079	1	Throttle Lever Ring					X	
11	410601541	1	Connecting Pipe(NPS 3/4)					X	
13	410601550	1	Connecting Pipe Lock Nut					X	
14	410601031	1	Cylinder Cap(NPS 3/4)					X	
15	134903002	1	Plug(NPTF 1/4)					X	
16	410601040	1	Cylinder Cap Bush					X	
17	410601590	1	Oil Feeder					X	
18	410601260	1	Upper Valve Plate					X	
19	410601280	1	Center Valve Plate					X	
20	410601150	1	Valve					X	
21	130401092	2	Valve Knock Pin			X			
22	410601270	1	Lower Valve Block					X	
23	131101033	1	O'Ring(P-32)			X			
24	410601010	1	Cylinder					X	
25	410601601	1	Exhaust Deflector					X	
26	410601610	1	Packing Nut					X	
27	410601620	1	Lock Retainer					X	
28	410601320	1	Inner Bush(Upper)					X	
29	131101035	2	O'Ring(P-35)	X					
30	136101034	1	Packing(Upper)	X					
31	136101035	1	Packing(Center)	X					
32	136101036	1	Packing(Lower)	X					
33	410601330	1	Outer Bush					X	
34	410601290	1	Piston				X		
35	410601650	1	Butt(Iron)					X	
36	410601630	1	Clamp Screw					X	
(35)	410601660	(1)	Butt(Aluminum)					X	
	41060145D	(1)	Handle Assy(Incl. Sym. No. 1, 2, 3, 5, 6, 7, 8, 9 and 10)						
(11)	410601540	(1)	Connecting Pipe(NPT 3/4: old type)					X	
(14)	410601030	(1)	Cylinder Cap(NPT 3/4: old type)					X	
	41060130D	(1)	Packing CP(Incl. Sym No. 30, 31 and 32)	X					

This service chart is a guide to expectant life of component parts. The replacement levels are based on average tool usage over a one year period.

Example : For 10 tools in use : 10 must - replace items will be required per year, 7 high wear items, etc.

Note: Quantities must be increased if the tool is in more service or continuous usage.

LEGEND

X — Type of wear, if no other comments apply.

A — Easily lost or damaged during disassembly and reassembly.